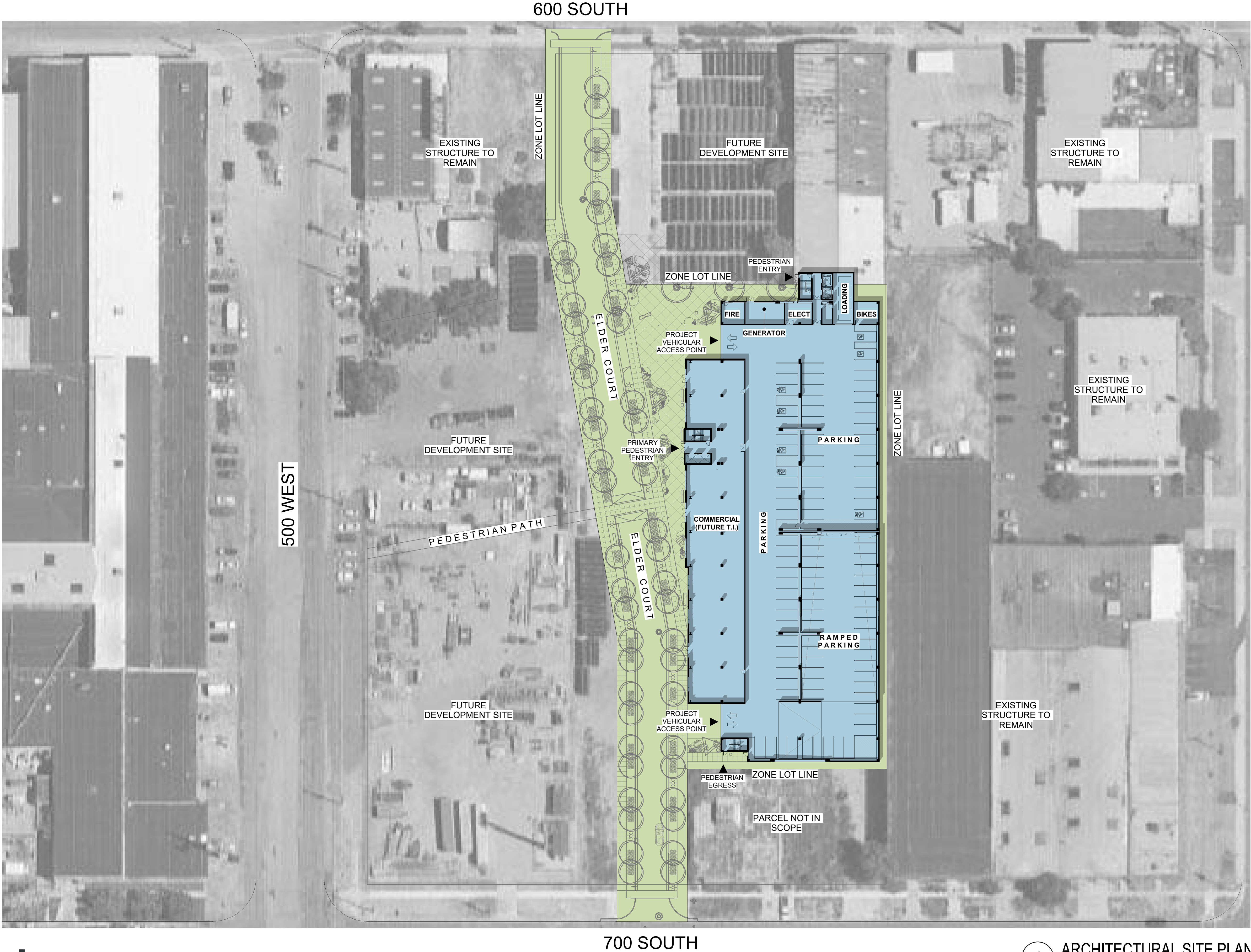


INDUSTRY NEIGHBORHOOD PARKING STRUCTURE

461 W 600 S, SALT LAKE CITY, UT 84101



CG GENERAL DISTRICT SETBACKS:

- 1. Front Yard: Ten feet (10').
- 2. Corner Side Yard: Ten feet (10').
- 3. Interior Side Yard: None required.
- 4. Rear Yard: Ten feet (10').

REQUESTED VARIANCE:

- 1. Rear Yard: 5'-6"